

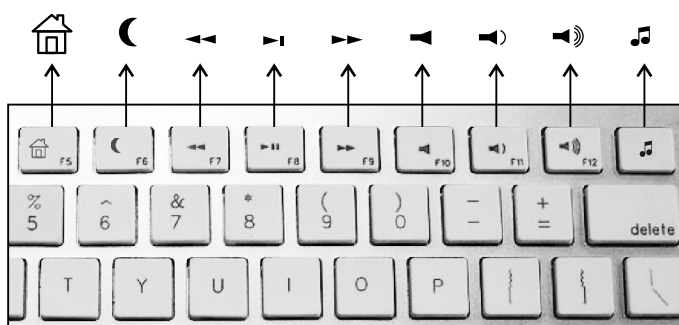
Bluetooth Wireless Keyboard

BT-101KB

User Guide

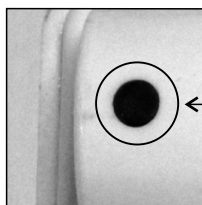
Before connecting the keyboard to your device, please make sure your device has built in bluetooth transmitting module, and has either one of the following operating system : Windows 7 / Windows XP (Service Pack 2 or above) / Windows Vista / iOS / Android.

【Keyboard front view / hot key definition】

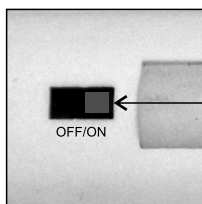


1. opens default web browser and links to home page. On iPad: returns to the desktop screen.
2. Turns the system into stand by or sleep mode.
3. Plays previous media track.
4. Plays or pauses current media track.
5. Plays next media track.
6. Mutes the system volume.
7. Decreases the system volume.
8. Increases the system volume.
9. Opens default media player.

【Keyboard back view / power switch and connect button】

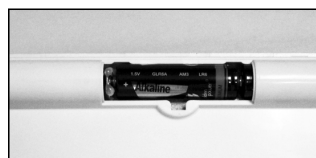


10. ● Is The Connect Button.

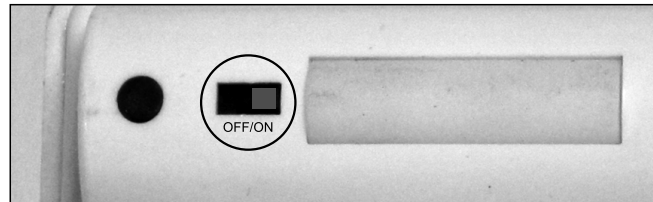


11. ■ Is The Power Switch.

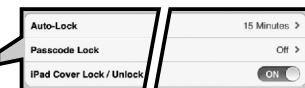
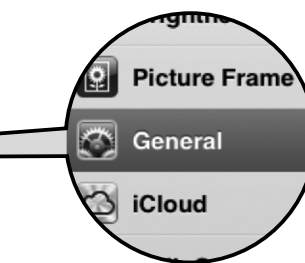
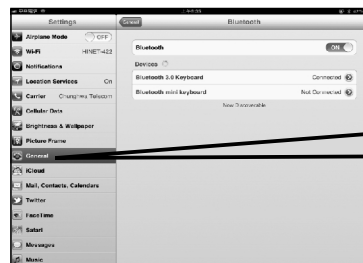
【Bluetooth keyboard pairing procedure on iPad】



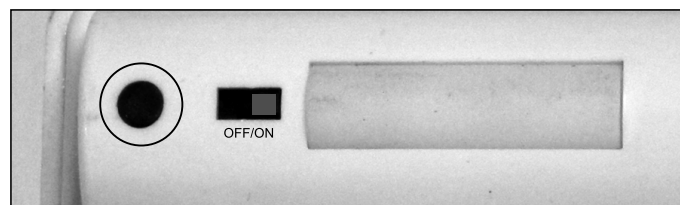
- 1 Insert alkaline batteries into the battery tray, and close the battery lid. Please be aware of battery direction.



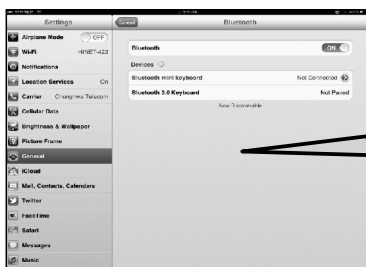
- 2 Turn on the keyboard power by sliding the power switch to the right, then on your iPad screen, please tap on the setting icon.



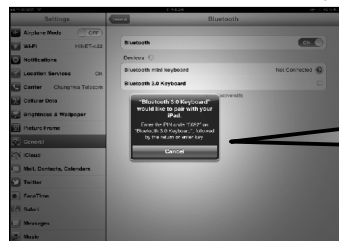
- 3 After entering the setting, please tap on the general setting of the left column, then tap on the Bluetooth device on the right column. Please make sure bluetooth device is set to "ON", your iPad will begin to search for available bluetooth device.



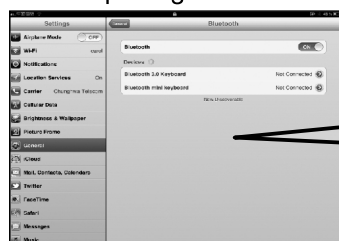
- 4 Press the connect button of your bluetooth keyboard to begin pairing. The LED indicator will begin flashing.



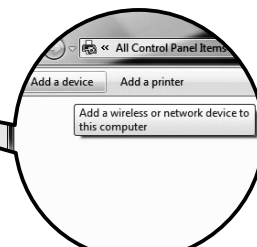
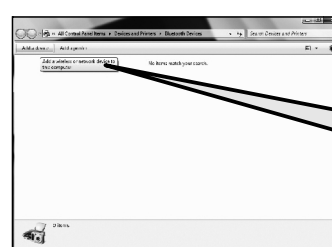
- 5 On your iPad search screen, you will see a "Bluetooth 3.0 keyboard" device, please tap the device, your iPad will start to pair up with the keyboard.



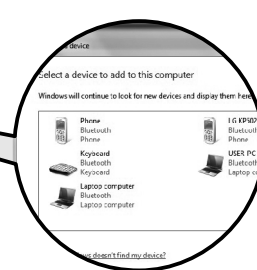
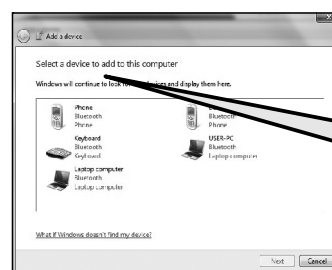
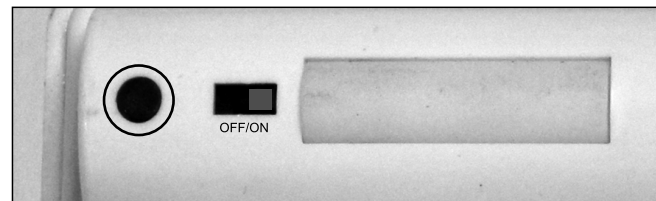
※Each pairing PIN CODE is different



- 6 iPad will ask you to enter a default selected pin code. Please follow the instruction and enter the relevant pin code from the keyboard follow by "enter, return" key. If the connection has been successfully set up, it will appear that the keyboard device is connected.



- 4 Please select add a "add a device" from the device window, and a "add a device" window will show up.

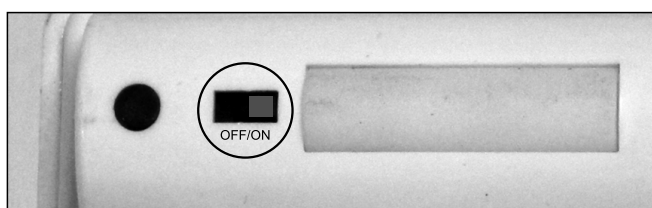


- 5 The computer will begin to search for available bluetooth device. Simply press the connect button from back side of your keyboard to begin pairing. On your screen, please select "Bluetooth 3.0 keyboard" device, and click on next step with your mouse.

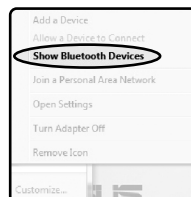
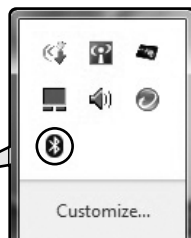
【 Bluetooth keyboard pairing procedure on Windows 7 】



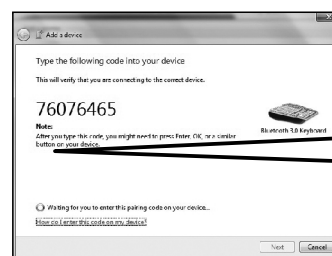
- 1 Insert alkaline batteries into the battery tray, and close the battery lid. Please be aware of battery direction.



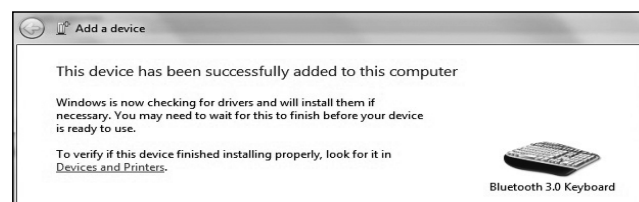
- 2 Turn on the keyboard power by sliding the power switch to the right. Please see direction of power indicator.



- 3 After starting the computer, please select and click on the bluetooth icon from your lower right screen. You may also find this "bluetooth devices" icon from your control panel.



※Each pairing PIN CODE is different



- 6 System will pop up a window asking you to enter a (8 digits) pin code from your keyboard follow by "Enter, return" key. Please enter the relevant pin code from your keyboard and press "enter, return" key to establish wireless connection. It will appear on the screen that the bluetooth keyboard has been successfully added to your system.

NOTICE:

1. If bluetooth keyboard cannot be connected, please verify if the LED indicator is flashing after pressing the connect button. If LED indicator is not flashing, please verify if the keyboard power has been turned on, or please verify if batteries are low in power (replace batteries if necessary). After verifying keyboard power source, please repeat bluetooth keyboard pairing procedure.
2. For smart phone or tablet users, please make sure your device has installed bluetooth keyboard driver. On some systems, especially mid or low level Android tablets or smart phones, bluetooth keyboard may not function properly even when the keyboard is been connected. For Android user, you may install available free keyboard driver APP to verify.