

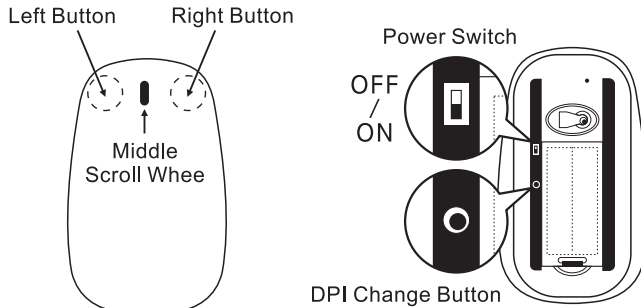
RF 2.4GHz Miracle Wireless Mouse

Before plugging in the USB mini receptor to the USB port, please make sure that the operating system is either one of the followings: Microsoft Windows 7, Windows 8, Windows XP (Service Pack 2 or newer version), Windows Vista (Service Pack 1 or newer version).

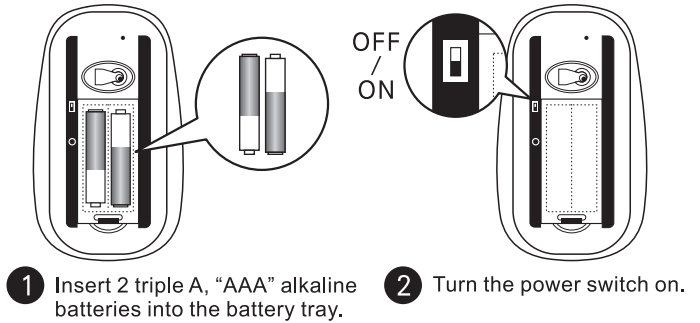
The wireless connection has already been setup. If the wireless connection is dropped or lost, please follow below connection setup procedure to reset the wireless connection.

User Guide

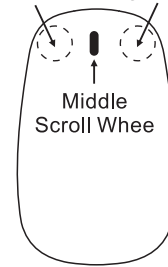
[Product Front View Illustration]



[Connection Setup Procedure]

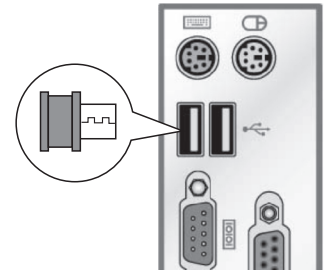


Left Button Right Button



- 3-1 Press the wireless mouse's left button, middle scroll wheel, and right button altogether for at least 5 seconds.
- 3-2 Then release the buttons.
(The wireless mouse enters into pairing mode.)

- 4 Immediately plugged in the USB mini receptor to the USB port after buttons' release.



Trouble Shooting

- 1.The wireless connection has already been setup, simply plug in the USB receptor to the USB port, then turn on the mouse's power switch. The wireless mouse should be working normal. Before using the wireless mouse, please make sure that the batteries are alkaline batteries and full of power.
- 2.After batteries' insertion and turning on the mouse's power switch, if the LED is not shining, please check the followings: verify the power source to see if batteries are low in power or not, verify if the mouse's power switch is been turned on correctly, verify if the mini USB receptor has been properly plugged into the USB port.
- 3.When turning on the power switch, or when replacing batteries, please do not press mouse's left and right button altogether to avoid entering into the testing mode.
 - ◎Wireless mouse testing mode entering procedure:When turning on the power switch, or when replacing batteries, press the mouse's left button and right button altogether for 1~3 seconds, then plugging the USB mini receptor to the USB port.
 - ◎Wireless mouse connection setup procedure: When turning on the power switch, or when replacing batteries, press the mouse's left button, middle scroll wheel, and right button altogether for 1~3 seconds. Immediately plug in the mini USB receptor right after button release.
- 4.If mouse cursor movements starts running in a diamond loop, the wireless mouse has entered into the testing mode. Do not panic, follow below instruction, and the mouse movement should be back to normal. Please turn off the wireless mouse's power switch, and then turn it back on. The wireless mouse should be back to normal. If turning off then turning on the power switch does not work, please repeat connection setup procedure to reset the wireless connection.
- 5.There are two different DPI resolutions setting. Resolution can be interchanged between 800 DPI and 1600 DPI by pressing the DPI change button. Different DPI setting will make the mouse cursor on the screen moves in different pace.

Package Contents

Wireless mouse 1 piece.
Mini USB receptor 1 piece.
Instruction manual 1 sheet.

Warranty Information

1 year warranty on functional defects

Product Specification

Product Name: Miracle Wireless Mouse
Dimension: 113 X 57 X 22mm
Weight: 43.5g (not including batteries)
Batteries: 2 double A (AA) alkaline batteries
Wireless distance: 10 meters (approx. 30 feet)
Wireless receptor: USB mini receptor
Color: Silver and white
DPI switch: 800 DPI and 1600 DPI exchange